

Cable and pipe transits for the marine and offshore industries

Contents

Protecting life and assets	3
The Roxtec sealing system	4
Certified protection	5
Roxtec Transit Designer™	6
Easy installation	7
Ensure safety and operational reliability	8
Solutions for multiple cables and pipes	10
Roxtec S transit	12
Roxtec SRC r20 transit	13
Roxtec SRC r40 transit	14
Roxtec SRC r20 GRP transit	15
Roxtec SF transit	16
Roxtec SK transit	17
Roxtec SBTB transit	18
Roxtec R transit with SL R	19
Roxtec R transit with SL GRP	20
Roxtec R transit with SLA	21
Roxtec R X transit	22
GK Firestop sealing kit	23
Solutions for single cable or metal pipe	24
Roxtec RS seal with SL RS	25
Roxtec RS seal with SL GRP	26
Roxtec RS seal with SLF RS	27
Roxtec RS X seal	28
Roxtec RS seal with SLA	29
Roxtec SPM™ seal	30
Roxtec TB seal with SL TB sleeve	31
Solutions for single plastic pipe	32
Roxtec RS PPS/S seal with SL	33
Roxtec RS PPS/S seal with SL GRP	34
Roxtec RS PPS/S F+WT seal with SL PPS	35
Roxtec Sleev-it™ Fire penetration seal	36
Roxtec Sleev-it™ Waterproof penetration seal	37
Solutions for cabinets	38
Roxtec GHM transit	39
Roxtec KFO transit	40
Roxtec EzEntry™	41
Roxtec ComSeal™	42
Roxtec HD transits	43

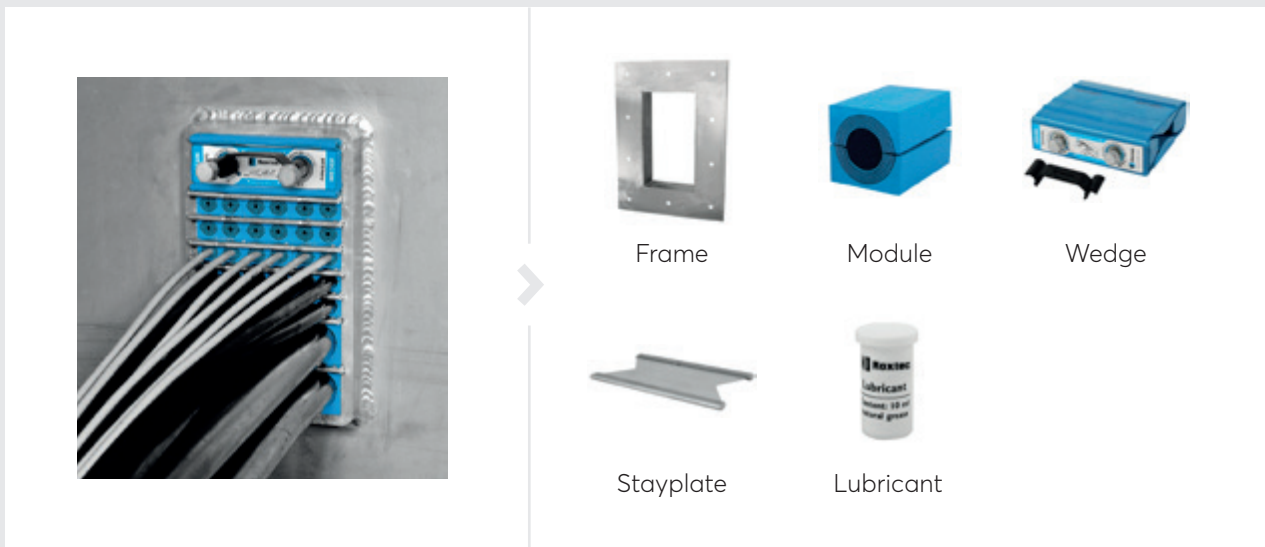


Protecting life and assets

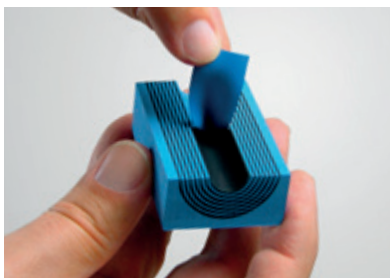
Benefit from the world's most flexible cable and pipe transits, wherever and whatever you operate. You can count on our expertise, from design to installation and throughout the lifecycle of your investment. Our passion is innovative sealing solutions, and our goal is to make our world a safer place. That is why we offer you a long-term partnership for efficiency and operational reliability.

The Roxtec sealing system

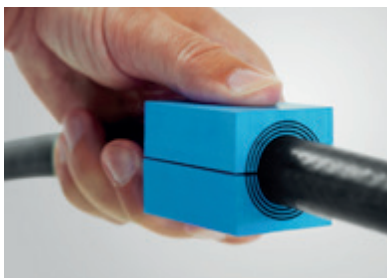
Our mechanical system is smart, safe and flexible. We provide rectangular, round and customized sealing solutions for one or multiple cables and pipes as well as pre-configured sealing kits. Thanks to the adaptability, you can always be sure to cover the sealing requirements with only a few components.



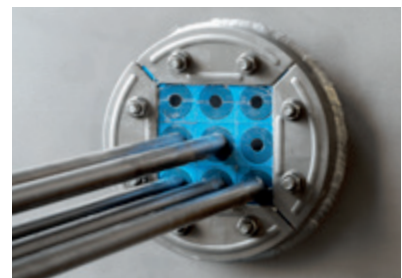
Multidiameter™ by Roxtec



Our invention with removable layers makes the seals adaptable.



It ensures a perfect fit to cables and pipes of many different sizes.



You get a strong, reliable barrier securing operational performance.

Certified protection

Roxtec cable and pipe transits protect people, ships, rigs and platforms all over the world against fire, gas, water and electromagnetic interference. Our seals ensure safe operations in harsh environments and are approved for use in hazardous locations.



Use the Roxtec sealing system to protect against multiple risks:

Fire

Stop A, H and jetfire. Prevent smoke from spreading.

Gas

Ensure complete tightness against air and gas pressure.

Water

Keep your unit safe and dry. Prevent humidity, water ingress and flooding.

Pressure

Protect against catastrophic as well as constant pressure.

Electromagnetic threats

Shield against EMI, EMP and lightning strike effects.

Particles

Take control of dirt, dust, salt and chemicals.

Blast

Protect against vibration, shockwaves and the risk of explosion.

"We save a lot of time, up to 80%, especially when changes are needed."

Niels Ammundsen, Chief Process Officer at OMT, Denmark



Roxtec Transit Designer™

This free, online engineering tool simplifies product selection and secures the entire process of reducing risk. Save time by designing hundreds of cable and pipe transits in just a few minutes.

Simple user input:

- Cable/pipe schedule or estimates
- Sealing/certification requirements
- Installation preferences
- Material quality selection



Automatically generated output:

- 2D drawings in DXF and PDF
- 3D STEP
- Bill of material in Excel
- Installation instructions
- Certificates

Sign up for Roxtec Transit Designer™ at roxtec.com/transitdesigner

Easy installation

Roxtec seals are quick and easy to install. You can open and reinstall them after design changes and save a lot of time by using the built-in spare capacity for upgrades with additional cables and pipes. You can always find best practice on roxtec.com/installation.



Support online and onsite



Installation videos

Watch and learn the safest sealing process.



Installation tools

Speed up daily work with our smart tools.



Installation training

Let your team learn our best tips and tricks.

Ensure safety and operational reliability

When striving to protect life and assets, you need correctly installed and fully functional sealing solutions. As sealing experts, we know how important cable and pipe transits are for your high safety standards. Roxtec transit safety services and Roxtec digital tools will help you take and maintain control of the installation quality throughout the entire lifecycle of your asset.

Services and digital tools



Ensure safety onboard

- Inspection of cable and pipe transits
- Verification of installation quality in new-build projects
- Experienced team of inspectors



Roxtec Transit Build™ software

- Control and documentation of installations
- Constantly updated for quality assurance
- Reports and results to hand over to owner

Learn more on roxtec.com/transit-safety-services



Solutions for multiple cables and pipes

Use the table to find a solution matching your needs. You are always welcome to contact your Roxtec representative for assistance.

	S	SRC	SRC GRP	SF	SK	SBTB
A-CLASS fire	●	●	●	●	●	●
H-CLASS fire	●	●		●	●	●
Jet fire	●	●		●	●	●
Watertightness 4 bar	●	●		●	●	●
Watertightness 2.5 bar						
Watertightness 2 bar			●			
Gas-tightness 2.67 bar	●	●		●	●	●
Gas-tightness 1 bar			●			
Cold smoke tightness						
Rectangular frame solution	●	●	●	●	●	●
Welded installation	●	●		●	●	●
Laminated installation			●			
General applications	●					
Stress constraints		●	●			
Uneven hole cut				●		
Raised/tilted installation					●	
Tightness test after installation/additional protection						●
Frame combinations available	●	●		●	●	●
Round sleeve solution						
Welded sleeve						
Non-weld sleeve						
Laminated sleeve						
Cable bundles						
Electrical busbar						
ES version available*	●	●		●	●	●
BG version available**	●			●	●	●
Ex version available***	●	●		●	●	●

*Electromagnetic shielding **Bonding and grounding ***IECEX/ATEX rated

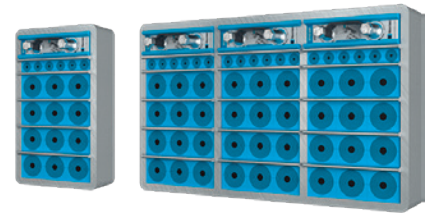
Complete product data online

Please visit roxtec.com/products for the latest and complete information on our sealing solutions. All technical data, such as product dimensions, ratings and certificates, drawings and installation instructions, are available online.

R with SL R	R with SL GRP	R with SLA	RX	GK FS SK	
●	●	●	●	●	A-CLASS fire
●					H-CLASS fire
					Jet fire
			●		Watertightness 4 bar
		●			Watertightness 2.5 bar
	●				Watertightness 2 bar
			●		Gas-tightness 2.67 bar
	●				Gas-tightness 1 bar
				●	Cold smoke tightness
					Rectangular frame solution
●					Welded installation
					Laminated installation
					General applications
					Stress constraints
					Uneven hole cut
					Raised/tilted installation
					Tightness test after installation/additional protection
					Frame combinations available
●	●	●	●	●	Round sleeve solution
●		●			Welded sleeve
		●	●		Non-weld sleeve
	●				Laminated sleeve
				●	Cable bundles
				●	Electrical busbar
●					ES version available*
					BG version available**
●					Ex version available***

Roxtec S transit

Transit for welding to the structure.



The Roxtec S is a multi-cable and pipe transit available in different materials and with a single or various combinations of openings. The transit frame is produced in 10mm thick metal and is attached to the structure by welding. The sealing modules are adaptable to cables and pipes of different sizes, and can be used to build in spare capacity in the transit.

- Easy to maintain and inspect
- Provides built-in spare capacity

Installation

Structure of installation:

- Metal

Mounting type:

- Welding

Ratings & certificates

Fire:

- A-CLASS according to IMO 2010 FTP Code
- H-CLASS according to IMO 2010 FTP Code + HC fire load curve
- E/EI rating according to EN 45545

Tightness:

- Gas: 2.67 bar (catastrophic)
- Water: 4 bar (catastrophic)

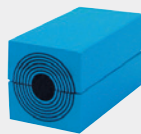
Sealing components



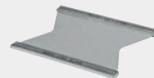
Roxtec S frame



Roxtec Wedge & Wedgekit



Roxtec RM module with Multidiameter™



Roxtec Stayplate



Roxtec Lubricant



Roxtec Sealing kit

Roxtec SRC r20 transit

Transit with metal frame for load-bearing structures.



The Roxtec SRC r20 is a cable and pipe transit with rounded corners to reduce stress concentration and the risk of cracks around the frame. The metal transit frame is available in different materials and in a single or various combinations of openings. The seal is welded to the structure. The standard sealing modules are adaptable to cables and pipes of different sizes, and can be used to build in spare capacity in the transit.

- Easy to maintain and inspect

Installation

Structure of installation:

- Metal

Mounting type:

- Welding

Ratings & certificates

Fire:

- A-CLASS according to IMO 2010 FTP Code
- H-CLASS according to IMO 2010 FTP Code + HC fire load curve

Tightness:

- Gas: 2.5 bar (catastrophic)
- Water: 4 bar (catastrophic)

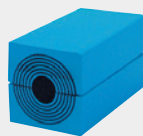
Sealing components



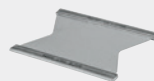
Roxtec SRC frame



Roxtec Wedge & Wedgekit



Roxtec RM module with Multidiameter™



Roxtec Stayplate



Roxtec Lubricant

Roxtec SRC r40 transit

Transit with metal frame for load-bearing structures.



The Roxtec SRC r40 is a cable and pipe transit with rounded corners to reduce stress concentration and the risk of cracks around the frame. The metal transit frame is available in different materials and in a single or various combinations of openings. The seal is welded to the structure. The standard sealing modules are adaptable to cables and pipes of different sizes, and can be used to build in spare capacity in the transit.

- Easy to maintain and inspect

Installation

Structure of installation:

- Metal

Mounting type:

- Welding

Ratings & certificates

Fire:

- A-CLASS according to IMO 2010 FTP Code
- H-CLASS according to IMO 2010 FTP Code + HC fire load curve

Tightness:

- Gas: 2.5 bar (catastrophic)
- Water: 4 bar (catastrophic)

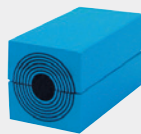
Sealing components



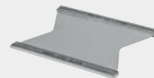
Roxtec SRC frame



Roxtec Wedge & Wedgekit



Roxtec RM module with Multidiameter™



Roxtec Stayplate



Roxtec Lubricant

Roxtec SRC r20 GRP transit



Rectangular transit with a glass reinforced polyester frame.

The Roxtec SRC r20 GRP is a cable and pipe transit with rounded corners to reduce stress concentration and the risk of cracks around the frame. The GRP frame is laminated or glued to the composite structure and configured with Roxtec RM modules that are adaptable to cables and pipes of different diameters. It can also be configured as a blank transit providing spare capacity for future needs.

- Light-weight
- Easy to maintain and inspect

Installation

Structure of installation:

- Composite

Mounting type:

- Lamination

Ratings & certificates

Fire:

- A-CLASS according to IMO 2010 FTP Code

Tightness:

- Gas: 1 bar (catastrophic)
- Water: 2 bar (catastrophic)

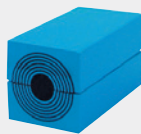
Sealing components



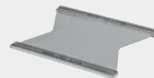
Roxtec SRC GRP frame



Roxtec Wedge & Wedgekit



Roxtec RM module with Multidiameter™



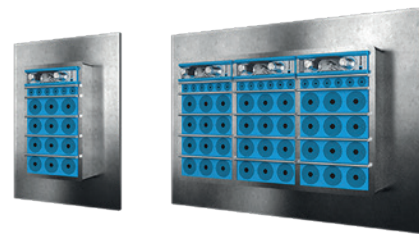
Roxtec Stayplate



Roxtec Lubricant

Roxtec SF transit

Cable and pipe transit with metal frame and flange for welding to the structure.



The Roxtec SF is a cable and pipe transit available in different materials and with a single or various combinations of openings. The transit frame is produced in 10mm thick metal and has a flange to simplify welding to unprecise holes. The standard sealing modules are adaptable to cables and pipes of different sizes and can be used to build in spare capacity in the transit.

- Easy to maintain and inspect
- Provides built-in spare capacity

Installation

Structure of installation:

- Metal

Mounting type:

- Welding

Ratings & certificates

Fire:

- A-CLASS according to IMO 2010 FTP Code
- H-CLASS according to IMO 2010 FTP Code + HC fire load curve
- E/EI rating according to EN 45545
- F/T rating according to UL 1479

Tightness:

- Gas: 2.5 bar (catastrophic)
- Water: 4 bar (catastrophic)

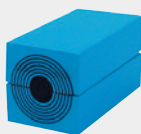
Sealing components



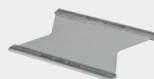
Roxtec SF frame



Roxtec Wedge & Wedgekit



Roxtec RM module with Multidiameter™



Roxtec Stayplate

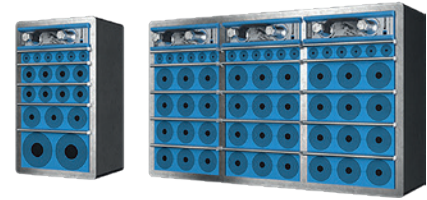


Roxtec Lubricant



Roxtec Sealing kit

Roxtec SK transit



Transit with extra deep metal frame for welding to the structure.

The Roxtec SK is a cable and pipe transit with extended depth that is available in different materials and in a single or various combinations of openings. The metal transit frame is attached through welding and used for an angular attachment to accommodate stiff cables that do not pass in a straight angle through a deck or bulkhead. The seal also allows for an increased distance between the packing space and the structure. The standard sealing modules are adaptable to cables and pipes of different sizes and can be used to build in spare capacity in the transit.

- Easy to maintain and inspect

Installation

Structure of installation:

- Metal

Mounting type:

- Welding

Ratings & certificates

Fire:

- A-CLASS according to IMO 2010 FTP Code
- H-CLASS according to IMO 2010 FTP Code + HC fire load curve
- Jet fire according to ISO 22899-1 and OTI 95634
- E/EI rating according to EN 45545

Tightness:

- Gas: 2.5 bar (catastrophic)
- Water: 4 bar (catastrophic)

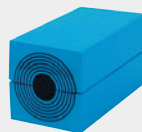
Sealing components



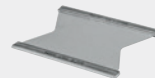
Roxtec SK frame



Roxtec Wedge & Wedgekit



Roxtec RM module with Multidiameter™



Roxtec Stayplate

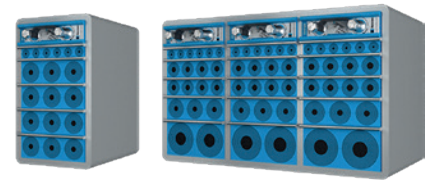


Roxtec Lubricant



Roxtec Sealing kit

Roxtec SBTB transit



Transit with metal frame for an extra level of fire protection.

The Roxtec SBTB is a cable and pipe transit for high levels of fire protection. The metal transit frame is to be welded to the structure. The seal provides easy verification of pressure-tightness after installation through its back-to-back arrangement with an extra set of packing material.

- Provides built-in spare capacity

Installation

Structure of installation:

- Metal

Mounting type:

- Welding

Ratings & certificates

Fire:

- A-CLASS according to IMO 2010 FTP Code
- H-CLASS according to IMO 2010 FTP Code + HC fire load curve
- Jet fire according to ISO 22899-1 and OTI 95634

Tightness:

- Gas: 2.5 bar (catastrophic)
- Water: 4 bar (catastrophic)

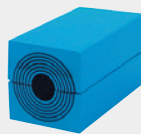
Sealing components



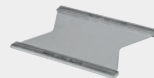
Roxtec SBTB frame



Roxtec Wedge & Wedgekit



Roxtec RM module with Multidiameter™



Roxtec Stayplate

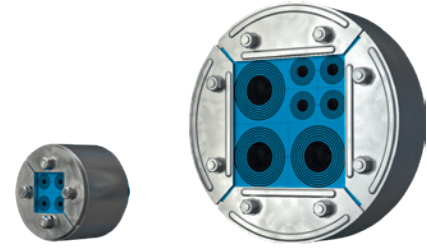


Roxtec Lubricant



Roxtec Sealing kit

Roxtec R transit with SL R



Round transit for sealing of multiple cables and pipes in a limited area.

The Roxtec R with SL R is a cable and pipe transit with sleeve for round holes. The compression is integrated in the transit frame so it seals by expansion. The standard sealing modules are adaptable to cables and pipes of different sizes and can also be used to build in spare capacity in the transit. The net on the backside protects during horizontal installations (not included in R 70 and R 75). The sleeve is welded to the structure.

- Rodent resistant
- Easy to maintain and inspect

Installation

Structure of installation:

- Metal

Mounting type:

- Welding

Ratings & certificates

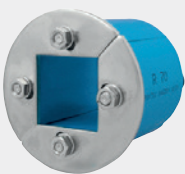
Fire:

- A-CLASS according to IMO 2010 FTP Code
- H-CLASS according to IMO 2010 FTP Code + HC fire load curve
- E/EI rating according to EN 45545

Tightness:

- Gas: 2.5 bar (catastrophic)
- Water: 4 bar (catastrophic)

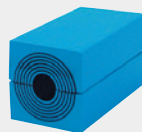
Sealing components



Roxtec R frame



Roxtec SL R sleeve

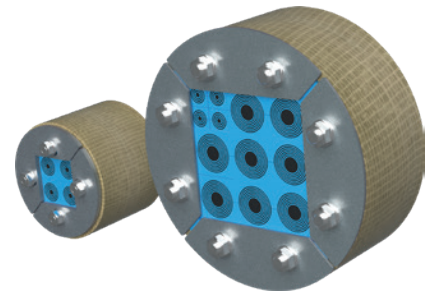


Roxtec RM module with Multidiameter™



Roxtec Lubricant

Roxtec R transit with SL GRP



Round transit for multiple cables or pipes in composite structures.

The Roxtec R with SL GRP is a cable and pipe transit with a glass reinforced polyester sleeve for round cut-outs. The compression is integrated in the transit frame. The Roxtec RM modules are adaptable to cables and pipes of different sizes and can also be used to build in spare capacity. The GRP sleeve is laminated or glued to the composite structure.

- Light-weight
- Easy to maintain and inspect

Installation

Structure of installation:

- Composite

Mounting type:

- Lamination

Ratings & certificates

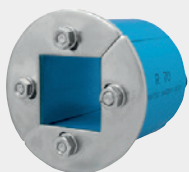
Fire:

- A-CLASS according to IMO 2010 FTP Code

Tightness:

- Gas: 1 bar (catastrophic)
- Water: 2 bar (catastrophic)

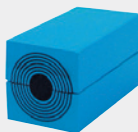
Sealing components



Roxtec R frame



Roxtec SL GRP Sleeve



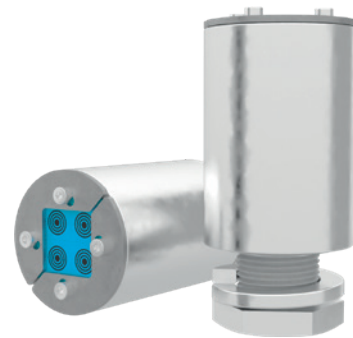
Roxtec RM module with Multidiameter™



Roxtec Lubricant

Roxtec R transit with SLA

Multi-cable transit with adaption sleeve for attachment in drilled holes.



The Roxtec R with SLA is a multi-cable transit with sleeve for round holes. The compression is integrated in the transit frame so it seals by expansion. The standard sealing modules are adaptable to cables of different sizes and can be used to build in spare capacity in the transit. The sleeve is threaded and is attached to the structure with a counter nut.

- Area efficient
- Perfect for retrofit
- Quick and easy to install

Installation

Structure of installation:

- Metal

Mounting type:

- Bolting

Ratings & certificates

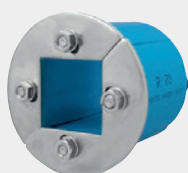
Fire:

- A-CLASS according to IMO 2010 FTP Code

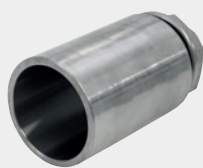
Tightness:

- Water: 2.5 bar (catastrophic)

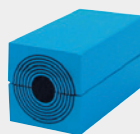
Sealing components



Roxtec R frame



Roxtec SLA adaption sleeve



Roxtec RM module with Multidiameter™



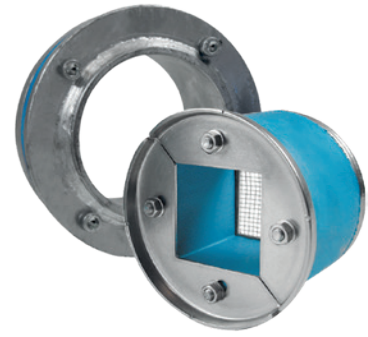
Roxtec Lubricant



Roxtec SLA R kit

Roxtec R X transit

Transit for sealing around multiple cables and pipes in a limited area without welding or bolting.



The Roxtec RX is a round cable and pipe transit with a sleeve for attachment through expansion. The standard sealing modules are adaptable to cables and pipes of different sizes, and can be used to build in spare capacity in the transit. When the bolts are tightened, the rubber gasket on the outside of the sleeve expands in the hole to firm attachment.

- Perfect for retrofit
- Quick and easy to install
- Adapts to cables and pipes of different sizes

Installation

Structure of installation:

- Metal

Mounting type:

- Existing hole

Ratings & certificates

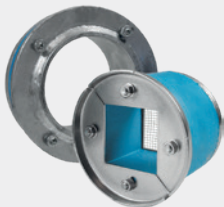
Fire:

- A-CLASS according to IMO 2010 FTP Code

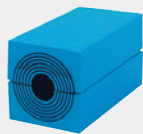
Tightness:

- Gas: 2.67 bar (catastrophic)
- Water: 4 bar (catastrophic)

Sealing components



Roxtec R X kit



Roxtec RM
module with
Multidiameter™



Roxtec Lubricant

GK Firestop sealing kit

Area efficient transit for cables, cable bundles or busbars.

The GK Firestop sealing kit is for use in sleeves in above waterline applications on ships and vessels. It combines cold smoke tightness with fire prevention as its integrated intumescent material expands to close the void in case of fire or a rise in temperature to over 150°C. The kit can be installed in a wide range of circular or oval sleeves, and it does not require any additional insulation for A-60 or A-0 applications.

- Area efficient
- Quick and easy to install



Installation

Structure of installation:

- Metal

Mounting type:

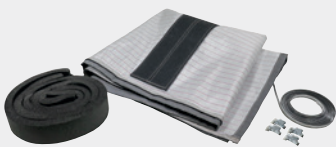
- Welding
- Bolting

Ratings & certificates

Fire:

- A-CLASS according to IMO 2010 FTP Code

Sealing components



GK FS SK

Solutions for single cable or metal pipe

Use the table to find a solution matching your needs. You are always welcome to contact your Roxtec representative for assistance.

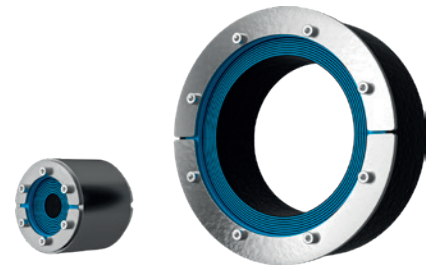
	RS with SL RS	RS with SL GRP	RS with SLF RS	RS X	RS with SLA	SPM	TB with SL TB
A-CLASS fire	○		○	○	○	○	○
H-CLASS fire	○		○				
Jet fire	○						
Watertightness 11 bar							○
Watertightness 4 bar	○		○	○			
Watertightness 2 bar		○					
Watertightness 2.5 bar					○		
Watertightness 1 bar						○	
Gas-tightness 2.67 bar	○		○	○			
Gas-tightness 2 bar							○
Gas-tightness 1 bar		○					
Gas-tightness 0.67 bar						○	
Metal pipe only						○	
Welded installation	○						○
Non-weld installation			○	○	○	○	
Laminated installation		○					
Bolted flanged installation			○				
Expansion attachment				○		○	
Single nut installation					○		
ES version available*	○		○				
Ex version available**	○		○				

*Electromagnetic shielding **IECEX/ATEX rated

Complete product data online

Please visit roxtec.com/products for the latest and complete information on our sealing solutions. All technical data, such as product dimensions, ratings and certificates, drawings and installation instructions, are available online.

Roxtec RS seal with SL RS



Penetration seal for a single cable or pipe.

The Roxtec RS with SL RS is a seal with metal sleeve for single cables or pipes. The entry seal has two halves with removable layers making it adaptable to cables and pipes of different sizes. The sleeve is welded to the structure.

- Quick and easy to install
- Provides excellent cable retention

Installation

Structure of installation:

- Metal

Mounting type:

- Welding

Ratings & certificates

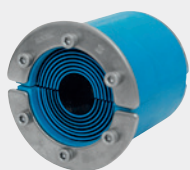
Fire:

- A-CLASS according to IMO 2010 FTP Code
- H-CLASS according to IMO 2010 FTP Code + HC fire load curve
- E/EI rating according to EN 45545

Tightness:

- Gas: 2.67 bar (catastrophic)
- Water: 4 bar (catastrophic)

Sealing components



Roxtec RS seal

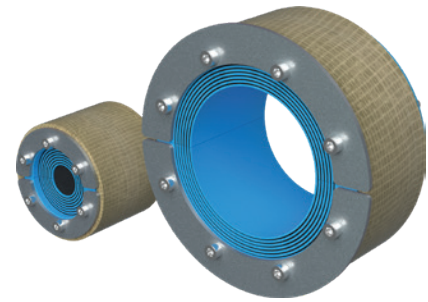


Roxtec SL RS sleeve



Roxtec Lubricant

Roxtec RS seal with SL GRP



Round penetration seal for a single cable or pipe in composite structures.

The Roxtec RS with SL GRP is a round seal for a single cable or pipe with a glass reinforced polyester sleeve. The entry seal has two halves with removable layers making it adaptable to cables and pipes of different sizes. The GRP sleeve is laminated or glued to the composite structure.

- Light-weight
- Provides excellent cable retention

Installation

Structure of installation:

- Composite

Mounting type:

- Lamination

Ratings & certificates

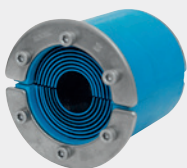
Fire:

- A-CLASS according to IMO 2010 FTP Code

Tightness:

- Gas: 1 bar (catastrophic)
- Water: 2 bar (catastrophic)

Sealing components



Roxtec RS seal

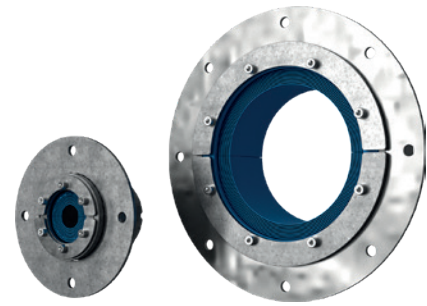


Roxtec SL GRP sleeve



Roxtec Lubricant

Roxtec RS seal with SLF RS



Penetration seal for a single cable or pipe.

The Roxtec RS with SLF RS is a seal with metal sleeve for single cables or pipes. The entry seal has two halves with removable layers making it adaptable to cables and pipes of different sizes. The sleeve is bolted to the structure.

- Quick and easy to install
- Provides excellent cable retention

Installation

Structure of installation:

- Metal
- Concrete & brick
- Sandwich
- Gypsum

Mounting type:

- Bolting

Ratings & certificates

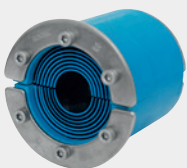
Fire:

- A-CLASS according to IMO 2010 FTP Code
- H-CLASS according to IMO 2010 FTP Code + HC fire load curve
- E/EI rating according to EN 1366-3
- E/EI rating according to EN 45545
- F/T rating according to UL 1479

Tightness:

- Gas: 2.67 bar (catastrophic)
- Water: 4 bar (catastrophic)

Sealing components



Roxtec RS seal



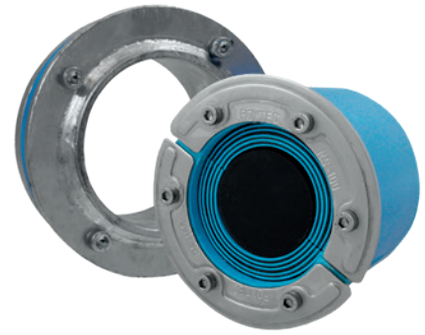
Roxtec SLF RS
sleeve



Roxtec Lubricant

Roxtec RS X seal

Transit for use when welding is not allowed, recommended or desired.



The Roxtec RS X is a non-weld seal with sleeve for single cables or pipes. The transit is ideal for retrofit or when welding is not allowed, recommended or desired. The sleeve has a rubber gasket on the outside and expands in the hole to firm attachment as the bolts are tightened. The RS X seal is adaptable to cables and pipes of different sizes through removable layers.

- Perfect for retrofit

Installation

Structure of installation:

- Metal

Mounting type:

- Existing hole

Ratings & certificates

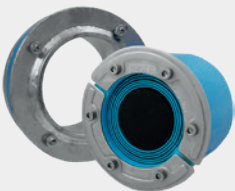
Fire:

- A-CLASS according to IMO 2010 FTP Code

Tightness:

- Gas: 2.67 bar (catastrophic)
- Water: 4 bar (catastrophic)

Sealing components



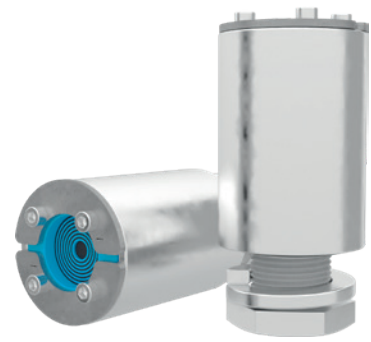
Roxtec RS X kit



Roxtec Lubricant

Roxtec RS seal with SLA

Cable seal with adaption sleeve for attachment in drilled holes.



The Roxtec RS with SLA is a seal with metal sleeve for single cables. The entry seal has two halves with removable layers making it adaptable to cables of different sizes. The sleeve is threaded and is attached to the structure with a counter nut.

- Area efficient
- Perfect for retrofit
- Quick and easy to install

Installation

Structure of installation:

- Metal

Mounting type:

- Bolting

Ratings & certificates

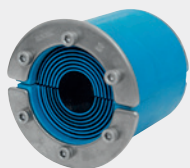
Fire:

- A-CLASS according to IMO 2010 FTP Code

Tightness:

- Water: 2.5 bar (catastrophic)

Sealing components



Roxtec RS seal



Roxtec SLA adaption sleeve



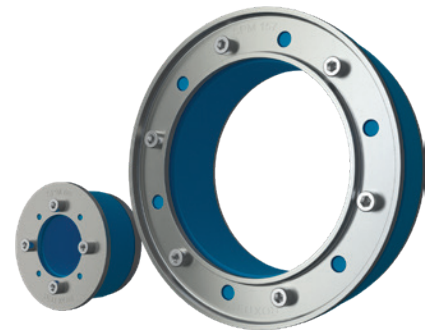
Roxtec Lubricant



Roxtec SLA RS kit

Roxtec SPM™ seal

Seal for metal pipes for use when welding is not allowed, recommended or desired.



The Roxtec SPM™ seal is a light-weight non-weld solution for single metal pipe entries. The transit is flexible towards pipe sizes as well as to uneven openings. The pipe seal is installed directly into structures without welding and has indicators showing when full compression is achieved.

- Light-weight
- Quick and easy to install
- Easy to maintain and inspect

Installation

Structure of installation:

- Metal

Mounting type:

- Existing hole

Ratings & certificates

Fire:

- A-CLASS according to IMO 2010 FTP Code

Tightness:

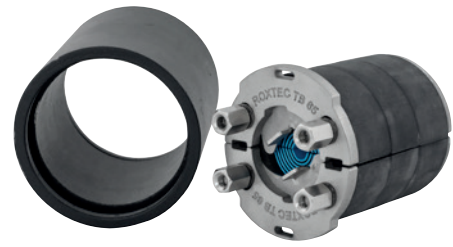
- Gas: 0.67 bar (catastrophic)
- Water: 1 bar (catastrophic)

Sealing components



Roxtec SPM™ seal

Roxtec TB seal with SL TB



Round penetration seal for a single cable or pipe in steel tank boundary structures.

The Roxtec TB (tank boundary) with SL TB is a round seal with a steel sleeve for a single cable or pipe. The entry seal has two halves with removable rubber layers making it adaptable to cables and pipes of different sizes. The front fittings ensure mechanical anchorage in the sleeve. The SL TB sleeve is welded to the structure.

- Quick and easy to install
- Adapts to cables and pipes of different sizes

Installation

Structure of installation:

- Metal

Mounting type:

- Welding

Ratings & certificates

Fire:

- A-CLASS according to IMO 2010 FTP Code

Tightness:

- Gas: 2 bar (catastrophic) / 1.2 bar (tank boundaries)
- Water: 11 bar (catastrophic) / 6.6 bar (tank boundaries)

Sealing components



Roxtec TB kit



Roxtec Lubricant

Solutions for single plastic pipe

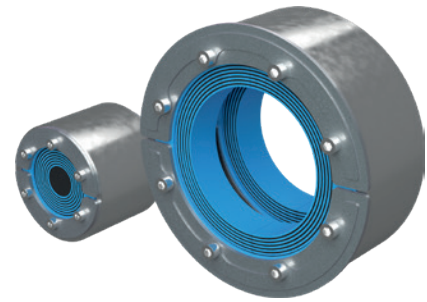
Use the table to find a solution matching your needs. You are always welcome to contact your Roxtec representative for assistance.

	RS PPS/S with SL	RS PPS/S with SL GRP	RS PPS/S F+WT with SL PPS	Sleev-it Fire seal	Sleev-it Waterproof seal
A-CLASS fire	●	●	●	●	●
B-CLASS fire			●	●	●
Watertightness 4 bar	●		●		
Watertightness 2 bar		●			
Watertightness 1 bar					●
Gas-tightness 2.67 bar	●		●		
Gas-tightness 1 bar		●			
Sustained watertightness after fire			●		
Welded installation	●		●	●	●
Laminated installation		●			

Complete product data online

Please visit roxtec.com/products for the latest and complete information on our sealing solutions. All technical data, such as product dimensions, ratings and certificates, drawings and installation instructions, are available online.

Roxtec RS PPS/S seal with SL RS



Light-weight plastic pipe seal for single-side installation.

The Roxtec RS PPS/S with SL RS is a seal for openings with plastic pipes in fire rated areas, such as steel decks and bulkheads. The seal ensures complete blocking of smoke, flames and water in case of fire and is approved for single-side installation. The transit is adaptable to pipes of different sizes through removable layers and includes a sleeve for welding to the structure. For plastic pipes up to 119mm.

- Quick and easy to install

Installation

Structure of installation:

- Metal

Mounting type:

- Welding

Ratings & certificates

Fire:

- A-CLASS according to IMO 2010 FTP Code
- E/EI rating according to EN 45545

Tightness:

- Gas: 2 bar (catastrophic)
- Water: 4 bar (catastrophic)

Sealing components



Roxtec RS PPS/S seal

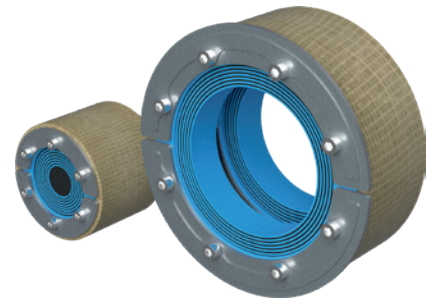


Roxtec SL RS sleeve



Roxtec Lubricant

Roxtec RS PPS/S seal with SL GRP



Round light-weight plastic pipe seal for single-side installation in composite structures.

The Roxtec RS PPS/S with SL GRP is a seal for a plastic pipe in fire rated composite structures, such as decks and bulkheads. The seal ensures complete blocking of water, cold smoke and gas, and in case of fire it will expand and maintain the structural fire rating. The seal is installed from one side and has removable layers making it adaptable to different pipe diameters. The GRP sleeve is laminated or glued to the composite structure.

- Light-weight
- Quick and easy to install

Installation

Structure of installation:

- Composite

Mounting type:

- Lamination

Ratings & certificates

Fire:

- A-CLASS according to IMO 2010 FTP Code

Tightness:

- Gas: 1 bar (catastrophic)
- Water: 2 bar (catastrophic)

Sealing components



Roxtec RS PPS/S
seal

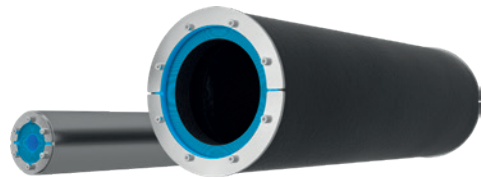


Roxtec SL GRP
sleeve



Roxtec Lubricant

Roxtec RS PPS/S F+WT seal with SL PPS



Plastic pipe seal for sustained water-tightness after fire.

The Roxtec RS PPS/S F+WT with SL PPS seal is a back-to-back arrangement of two seals for plastic pipe penetrations below waterline where there is demand for sustained watertightness after fire in accordance with SOLAS Ch. II-1 Reg. 13.2.3 (2009 issue) and IMO MSC/circ. 736 Par. 2.1. Each seal consists of two halves with removable layers for adaptability to pipes of different sizes. The transit includes a sleeve for welding to the structure.

- Easy to maintain and inspect

Installation

Structure of installation:

- Metal

Mounting type:

- Welding

Ratings & certificates

Fire:

- A-CLASS according to IMO 2010 FTP Code

Tightness:

- Gas: 2 bar (catastrophic)
- Water: 4 bar (catastrophic)

Sealing components



Roxtec RS PPS/S F+WT seal

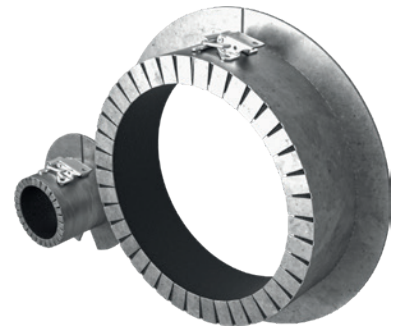


Roxtec SL PPS sleeve



Roxtec Lubricant

Roxtec Sleeve-it™ Fire penetration seal



Fire penetration seal for single plastic pipes.

The Roxtec Sleeve-it™ Fire penetration seal is a light-weight and versatile solution. Its stainless steel casing contains intumescent material which closes off the penetration in case of fire. It is installed from one side and is openable so it can be used for both new-build and retrofit. It is available for both steel and aluminum structures.

- Light-weight
- Area efficient
- Quick and easy to install

Installation

Structure of installation:

- Metal

Mounting type:

- Welding

Ratings & certificates

Fire:

- A-CLASS according to IMO 2010 FTP Code
- B-CLASS according to IMO 2010 FTP Code

Sealing components

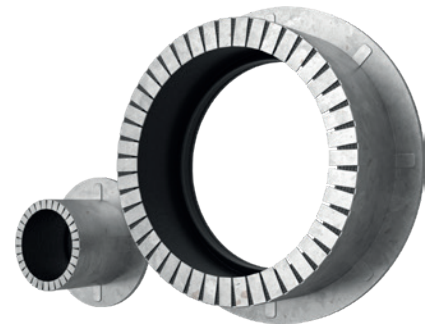


Roxtec Sleeve-it™ Fire penetration seal



Roxtec fire sealant

Roxtec Sleev-it™ Waterproof penetration seal



Penetration seal for plastic pipes for basic protection against fire, gas and water.

The Roxtec Sleev-it™ Waterproof penetration seal is a light-weight solution. Its stainless steel casing contains intumescent material to block the penetration in case of fire and its rubber grommet is engineered for a range of pipe sizes. It is installed from one side and is available for both steel and aluminum structures.

- Light-weight
- Area efficient
- Quick and easy to install

Installation

Structure of installation:

- Metal

Mounting type:

- Welding

Ratings & certificates

Fire:

- A-CLASS according to IMO 2010 FTP Code
- B-CLASS according to IMO 2010 FTP Code

Tightness:

- Water: 1 bar (catastrophic)

Sealing components



Roxtec Sleev-it™
Waterproof
penetration seal

Solutions for cabinets

Use the table to find a solution matching your needs. You are always welcome to contact your Roxtec representative for assistance.

	GHM	KFO	EzEntry	ComSeal	HD
Cable range (mm)	3.5-99	3.5-99	3.5-34.5	3.5-34.5	3.5-54
IP 55				●	
IP 66/67	●	●	●		●
UL/NEMA 3, 12, 12K				●	
UL/NEMA 4, 4X, 12, 13	●		●		●
Composite		●	●		
Powder coated aluminum				●	
Stainless steel					●
Hot dip galvanized mild steel	●				
ES version available*	●			●	
BG version available**	●				●
Ex version available***	●				●

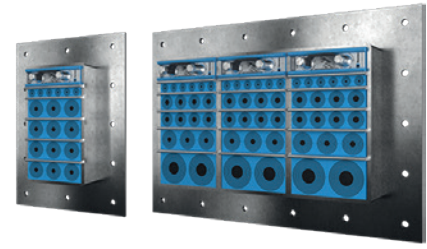
*Electromagnetic shielding **Bonding and grounding ***IECEX/ATEX rated

Complete product data online

Please visit roxtec.com/products for the latest and complete information on our sealing solutions. All technical data, such as product dimensions, ratings and certificates, drawings and installation instructions, are available online.

Roxtec GHM transit

Transit for high cable density and large cables.



The Roxtec GHM is a light-weight cable entry seal which is attached by bolting and includes a sealing strip to seal against the structure. The transit frame is available in different materials and in a single or various combinations of openings. The sealing modules are adaptable to cables and pipes of different sizes and can be used to build in spare capacity in the transit.

- Rodent resistant
- Area efficient

Installation

Structure of installation:

- Metal
- Sandwich
- Cabinets & enclosures

Mounting type:

- Bolting

Ratings & certificates

Fire:

- A-CLASS according to IMO 2010 FTP Code
- H-CLASS according to IMO 2010 FTP Code + HC fire load curve

Tightness:

- Water: 3 bar (catastrophic)
- IP 66/67

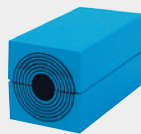
Sealing components



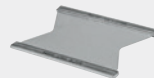
Roxtec GHM frame



Roxtec Wedge & Wedgekit



Roxtec RM module with Multidiameter™



Roxtec Stayplate



Roxtec Lubricant



Roxtec Sealing kit

Roxtec KFO transit

Area efficient light-weight transit.



The Roxtec KFO transit has a light-weight composite frame suitable for constructions where it is important to keep weight down to a minimum. The frame is openable and can be installed around already routed cables. The sealing modules are adaptable to cables and pipes of different sizes and can be used to build in spare capacity in the transit.

- Light-weight
- Area efficient
- Perfect for retrofit
- Quick and easy to install
- Allows pre-terminated cables

Installation

Structure of installation:

- Metal
- Sandwich
- Cabinets & enclosures

Mounting type:

- Bolting

Ratings & certificates

Tightness:

- IP 66/67

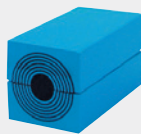
Sealing components



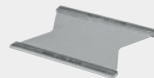
Roxtec KFO frame



Roxtec Wedge & Wedgekit



Roxtec RM module with Multidiameter™



Roxtec Stayplate



Roxtec Lubricant



Roxtec Sealing kit

Roxtec EzEntry™



Light-weight cable entry seals with composite frame.

The Roxtec EzEntry™ cable entry seals have light-weight composite frames and fit directly into standard openings. The seals are available in six sizes for cable capacity from 4 to 32 cables, and provide IP 66/67 protection.

- Corrosion resistant
- Area efficient
- Allows pre-terminated cables

Installation

Structure of installation:

- Cabinets & enclosures

Mounting type:

- Bolting

Ratings & certificates

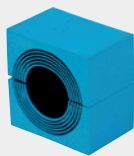
Tightness:

- IP 66/67
- UL/NEMA 4,4X,12,13

Sealing components



Roxtec EzEntry™
frame



Roxtec CM
module with
Multidiameter™



Roxtec Lubricant



Roxtec EzEntry™ kit

Roxtec ComSeal™

IP 55 rated entry seals with aluminum frame.



The Roxtec ComSeal™ is rated for IP 55 and available with powder coated aluminum and AISI 316, stainless steel frames. The transit is available in six different sizes to accommodate up to 32 cables.

- Rodent resistant
- Corrosion resistant
- Light-weight
- Area efficient

Installation

Structure of installation:

- Cabinets & enclosures

Mounting type:

- Bolting

Ratings & certificates

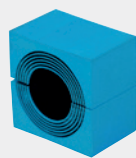
Tightness:

- IP 55
- UL/NEMA 3,12,12K

Sealing components



Roxtec ComSeal™ frame



Roxtec CM module with Multidiameter™



Roxtec Assembly Gel



Roxtec ComSeal™ kit

Roxtec HD transits

High cable density transit devices with frame in 316L.



The Roxtec HD transits are cable entry devices for harsh and hazardous environments that allow up to 32 cables per opening. They are available in three different sizes. The cable transit has a 316L stainless steel frame and sealing modules which are adaptable to a variety of cable sizes.

- Rodent resistant
- Corrosion resistant
- Light-weight
- Area efficient
- Allows pre-terminated cables

Installation

Structure of installation:

- Cabinets & enclosures

Mounting type:

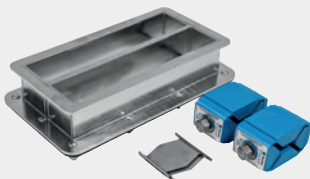
- Bolting

Ratings & certificates

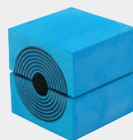
Tightness:

- IP 66/67
- UL/NEMA 4,4X,12,13

Sealing components



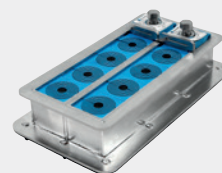
Roxtec HD frame



Roxtec HD module with Multidiameter™



Roxtec Lubricant



Roxtec HD kit solutions

All rights reserved

We reserve the right to make changes to the product and technical information without further notice. Any errors in print or entry are no claims for indemnity. The content of this publication is the property of Roxtec International AB and is protected by copyright.

Disclaimer

*The Roxtec cable and pipe entry sealing system ('the Roxtec system') is a modular-based system of sealing products consisting of different components. Each and every one of the components is necessary for the best performance of the Roxtec system. The Roxtec system has been certified to resist a number of different hazards. Any such certification, and the ability of the Roxtec system to resist such hazards, is dependent on all components that are installed as a part of the Roxtec system. Thus, the certification is not valid and does not apply unless all components installed as part of the Roxtec system are manufactured by or under license from Roxtec ('authorized manufacturer'). Roxtec gives no performance guarantee with respect to the Roxtec system, unless (I) all components installed as part of the Roxtec system are manufactured by an authorized manufacturer and (II) the purchaser is in compliance with (a), and (b), below.

(a) During storage, the Roxtec system or part thereof, shall be kept indoors in its original packaging at room temperature.

(b) Installation shall be carried out in accordance with Roxtec installation instructions in effect from time to time.

The product information provided by Roxtec does not release the purchaser of the Roxtec system, or part thereof, from the obligation to independently determine the suitability of the products for the intended process, installation and/or use.

Roxtec gives no guarantee for the Roxtec system or any part thereof and assumes no liability for any loss or damage whatsoever, whether direct, indirect, consequential, loss of profit or otherwise, occurred or caused by the Roxtec systems or installations containing components not manufactured by an authorized manufacturer and/or occurred or caused by the use of the Roxtec system in a manner or for an application other than for which the Roxtec system was designed or intended.

Roxtec expressly excludes any implied warranties of merchantability and fitness for a particular purpose and all other express or implied representations and warranties provided by statute or common law. User determines suitability of the Roxtec system for intended use and assumes all risk and liability in connection therewith. In no event shall Roxtec be liable for indirect, consequential, punitive, special, exemplary or incidental damages or losses.

The Roxtec products are offered and sold in accordance with the conditions of the Roxtec General Terms of Sales. The latest version of the Roxtec General Terms of Sales can be found and downloaded from roxtec.com/general-terms-of-sales.*

Protecting life and assets

Roxtec is the world leader within flexible cable and pipe transits. Since the start in Sweden in 1990 we have grown successfully to cover all continents. Our passion is innovative sealing solutions, and our goal is to make our world a safer place.

- Extensive R&D resources and advanced test facilities
- Inventor of Multidiameter™
- Customers in more than 80 markets